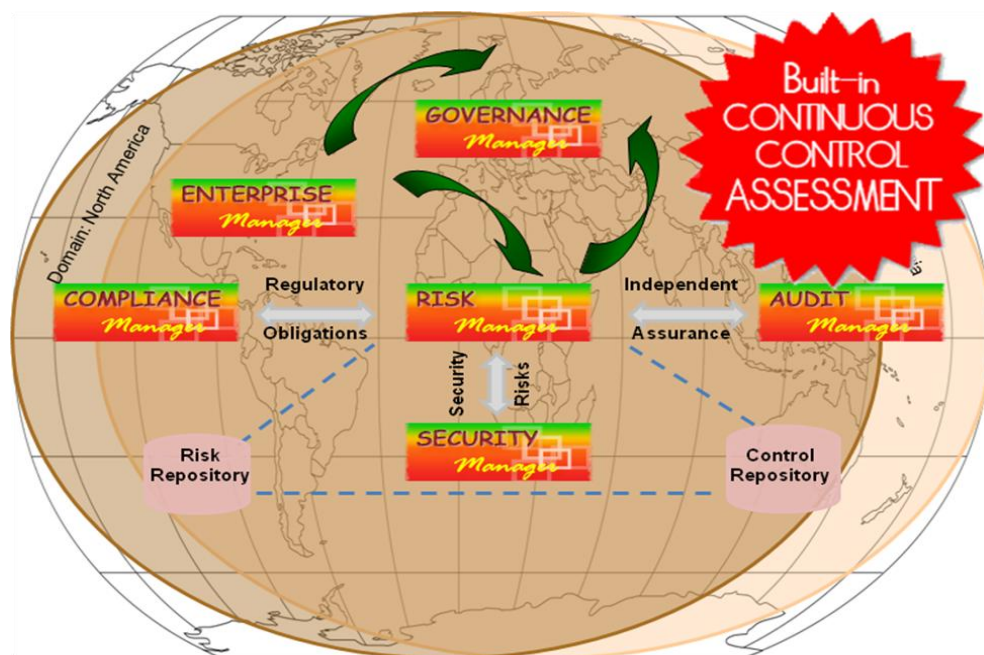


eGRACS® Enterprise Risk Management (ERM) Suite is a centralised, access-controlled, flexible, scalable and easily accessed software solution for automating enterprise level risk management and control assurance.

eGRACS ERM Suite consists of six tightly integrated modules that create a powerful platform for governance, risk management, audit, compliance and security that is accessed using a web browser.

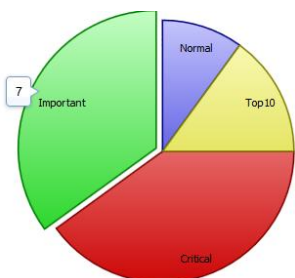


Group represents a discrete area of the business that has similar risk profiles. For example, a business may offer certain products and services through designated delivery channels utilising technology systems. Each of these components (i.e. Product, Service, Channel and System) can be defined as a Group and related risks managed easily.

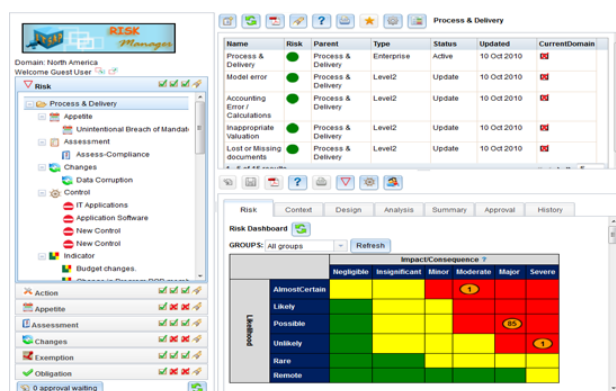
Module is a combination of Groups that relate to a specific area of the enterprise risk and assurance landscape that require similar governance oversight and control processes.

Domain represents a business vertical (e.g. a service function, product line) or operational area (e.g. North America, Europe, Australasia) or teams (e.g. Delivery, Support, Design) that exist in the organisation.

Using web technology, eGRACS ERM Suite operates fully online enabling collaboration between multiple risk and assurance teams irrespective of their location. A single repository, powered by Oracle RDBMS (alternatively Microsoft SQL Server or MySQL), capture and organise all information relating to the overall process of managing and mitigating enterprise risks.



eGRACS® ERM Suite includes powerful charting, dashboard and reporting functionality that enables extensive reporting based on selected criteria. Report content can be optimised using powerful filtering capabilities based on user selected fields and filtering conditions.



Risk management and control assurance activities can be undertaken at enterprise level using whatever methodology and scoring system you may wish to employ. For example, risks can have one or multiple assessments. Risk scoring can be performed using matrices ranging from 3x3 to 10x10. Different risk appetites, key indicators and control effectiveness test steps are fully definable.

eGRACS[®] Enterprise Risk Management (ERM) Suite provides a unified risk, control and assurance management system that helps identification, evaluation, mitigation and seamless communication among governance, risk, audit, compliance and security teams located anywhere at any time.

eGRACS[®] ERM Suite unifies governance, risk management, audit, compliance and security functionalities in a single comprehensive and modular system. eGRACS ERM Suite comprises of the following core modules:



eGRACS Governance Manager provides enterprise-wide view of all key information required for risk-based

governance in a single end-to-end reporting system.

eGRACS Risk Manager provides comprehensive risk management capability enabled by a central repository



of risks, appetite and controls. Permits unlimited number of controls and actions to be defined, tracked and reported at any stage.



eGRACS Audit Manager enables centralised management of the audit process, including risk based planning, controls testing, reporting findings and tracking remediation actions. Core process steps include planning,

staffing, testing and reporting, and collaborating information among risk, compliance and security teams. Access to audit records can be restricted to specific teams performing the audit.

eGRACS Compliance Manager helps automate the management of compliance policies, regulatory obligations, ongoing testing,



identification of breaches and remediation process.



eGRACS Security Manager provides an enterprise-wide capability to capture and track threats to information

assets, vulnerability scans and remediation activities.

eGRACS Enterprise Manager enables risk profiling critical business components (such as products, services, channels and systems). Inherent risks and mitigating



controls can be defined and ownership assigned for additional actions. Fully supports workflow (such as approvals and email notification). This module works in conjunction with other modules (such as eGRACS Risk Manager) to make the entire governance, risk and control assurance processes seamless and repeatable.

Front-end is completely browser-based (supports MS Internet Explorer, Mozilla Firefox, Apple Safari, Google Chrome and Opera) and is readily accessible from mobile devices such as Apple iPads, Android tablets and BlackBerry Playbook.

Powerful User Access Control function allows access to be controlled and limited at Domain, Module, Group or Record levels and in any combination of these.

Role Based Access Control

User access permissions can be efficiently controlled through Role Based Access Privileges.

Fine Grained Access Permission

Application access can be restricted at multiple levels, such as Module, Group and User.

Strong Authentication

Password Strength Rule enforces strong authentication in order to thwart unauthorised access attempts to the application and underlying data.

Data Security

All communication between the browser and server is protected with strong Secured Sockets Layer (SSL) encryption. This includes session information and user passwords.

Record level Access Security

Access can be further restricted at individual record level, so that confidential information can be easily restricted on a need-to-have basis.

